

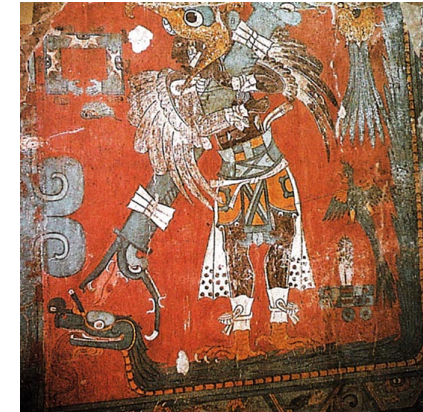
Palenque palace, Maya

1. Important Classic Maya city - port of trade
2. Corbel-vaulted galleries - private palace, tower, even toilets
3. Fine stone and stucco Reliefs - show royalty
4. Large, stairways, enclosed court - originally painted



Cacaxtla, Central Mexico

1. After fall of Classic Cities- movement Of peoples
2. Artistic exchanges
3. Maya style in North - but eagle Warrior like central Mexico
4. Mural - wall painting



Hall of Columns, Mitla Zapotec/ Mixtec, Oaxaca

1. Example of Post-classic Architecture
2. Mosaic Veneer - patterns Different Mixtec areas
3. Flat-roofed, columns
4. Mixtec goldwork Codices



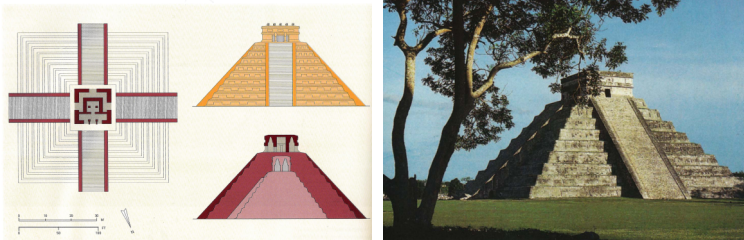
Tula, Toltec, Central Mexico

1. Atlantean columns "pill box"
2. Colonnades - Create large space
3. Influenced Yucatan Maya
4. Site important - Later Mexico Quetzalcoatl



Castillo, Chichén Itzá, Toltec-Maya (Yucatan)

1. Toltec influence, also Puuc (Maya) Flat top temple
2. Really a temple, Kukulcan
3. 4 sides - 4 cardinal directions - 365 steps, 9 levels
4. Other structures-Caracol, ball court, cenote



Chacmool, Chichén Itzá Toltec-Maya (Yucatan)

1. Toltec 3-D - sculpture
2. Subject - captive - possibly Maya
3. Placed in front of throne, Held sacrifice
4. Fallen warrior - faces out - block-like style like Toltec



Codex Mendoza, Mexica (Aztec)

1. Few books survive - this one Spanish Viceroy Known for destruction of sites
2. Includes symbols- Founding of Tenochtitlan, Year signs, regions Subject to empire
3. Aztec-Spanish style - 16thc.
4. Possible Mixtec influence Though this one paper - amatl



Malinalco, Mexica

1. Ex. Of Mexica Temple in region of Aztec empire
2. Rock-cut "living rock" - thatch roof
3. Interior - eagle, Jaguar thrones - sacrifice Military orders
4. 13 steps - heaven Serpent facade



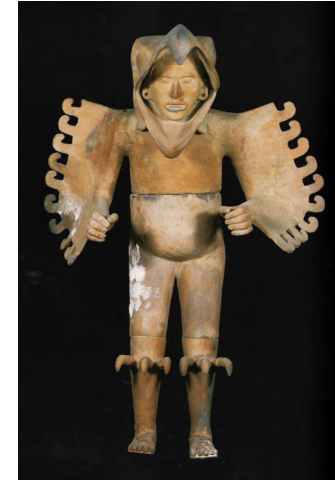
Coatlicue, Mexico

1. Mexica (Aztec) naturalism - combines 3-D and 2-D sculpture, relief carving
2. One of # of important works found near Templo Mayor, Tenochtitlan (destroyed by Spanish)
3. This one found late 18th c.
4. Story - earth goddess (mother of Huitzilopochtli), head cut off - serpents
Serpent skirt, hands and hearts necklace



Eagle warrior, Mexico

1. Terracotta ceramic - almost life-size found also Templo Mayor - House of Eagles
 2. Aztec naturalism - very detailed - ex. Finger nails, eagle costume
 3. Eagle warrior - member of important Military order - hierarchical society
 4. 5 sections, mold then modeled details
- Might mention other naturalistic works such as animals in sculpture



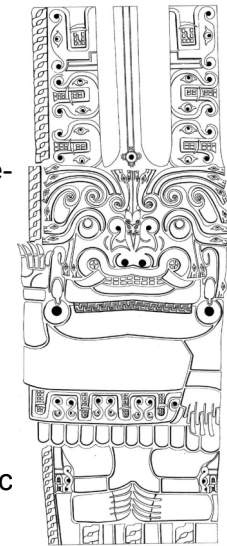
Feather headdress, Mexico

1. Owned by Motecuhzoma II, collected by Cortes - now in Vienna - should be returned - repatriation
2. Some of most important arts - temporary - quetzal feathers, blue cotinga
3. Artists - class of featherworkers - served elite noble class
4. Wrongly considered "minor" arts like goldwork



Lanzón, Chavin, Andes region

1. Still "in situ" Chavin de Huantar - faces raising sun - deep in old temple - Marks center of world
2. Visual pun - composite Creatures (serpent heads, faces)
3. Chavin style spread Throughout region - Early Horizon period
4. Art at site shows hallucinogenic cac Ceremonial use - shaman



Gold crown, Chavin

1. Chavin style, again Early Horizon - first widespread style of Andes
2. Gold - hammered sheets - repousse
3. Staffbearer - visual pun
4. Other arts include stirrup spout vessel



Paracas textile

1. Camelid fiber
2. Found in mummy bundles
3. Dry, arid area preserved
4. Poncho - embroidered in linear style warp, weft woven on upright loom



Paracas textile

- 1. Importance of textile in Andean society
- 2. Shamanic subject - flying shaman
- 3. Hallucinogenic vision
- 4. Block color style



Nasca ceramic

1. South coast, Peru - also lines
2. Hand-built Ceramic - Burnished slip
3. Flying shaman Subject
4. Wrap-around painting



Nasca Lines

1. Many subjects - animals, geometric
2. Difficult colonial past - little record
3. Possibly mark Huaca - sacred Space - calendar
4. Underground Water sources



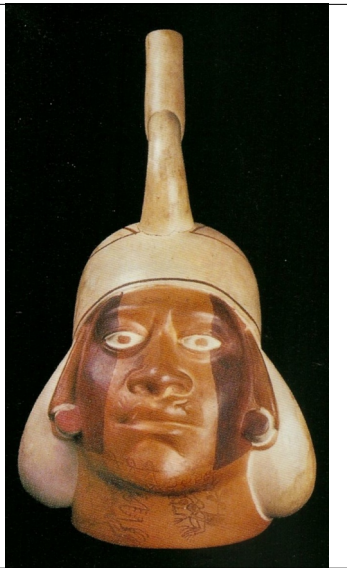
Earspool, Moche

1. North coast, Peru
2. Known for adobe building
3. Found in intact tomb Lord of Sipán
4. Many gold pieces found - turquoise inlay - variety of techniques



Ceramic vessel, Moche

1. Naturalistic portrait - Elite noble class
2. Made with mold, Modeled details
3. Burnished red, Cream slip
4. Stirrup-spout - lots Of other subjects



Machu Picchu, Inca

1. Late Horizon Empire
 2. Ceremonial - Possible retreat
 3. Stone masonry
 4. Huaca - sacrificial site
- Also houses



Royal tunic, Inca

1. Acllacuna women
Importance of weaving
2. Camelid fiber
Vicunas
3. Tocado patterns
Mark regions, show
Status
4. Upright loom



Silver figure, Inca

1. Gold and silver mostly
Destroyed by Spanish
2. Found in capac hucha
Child burial
3. Wears original weaving
4. Inca adapted metal
Techniques from
Chimu lost-wax

