

**De Anza College Stelling Road
Bus Stop Improvement**

**De Anza College Facilities Committee
June 14, 2016**

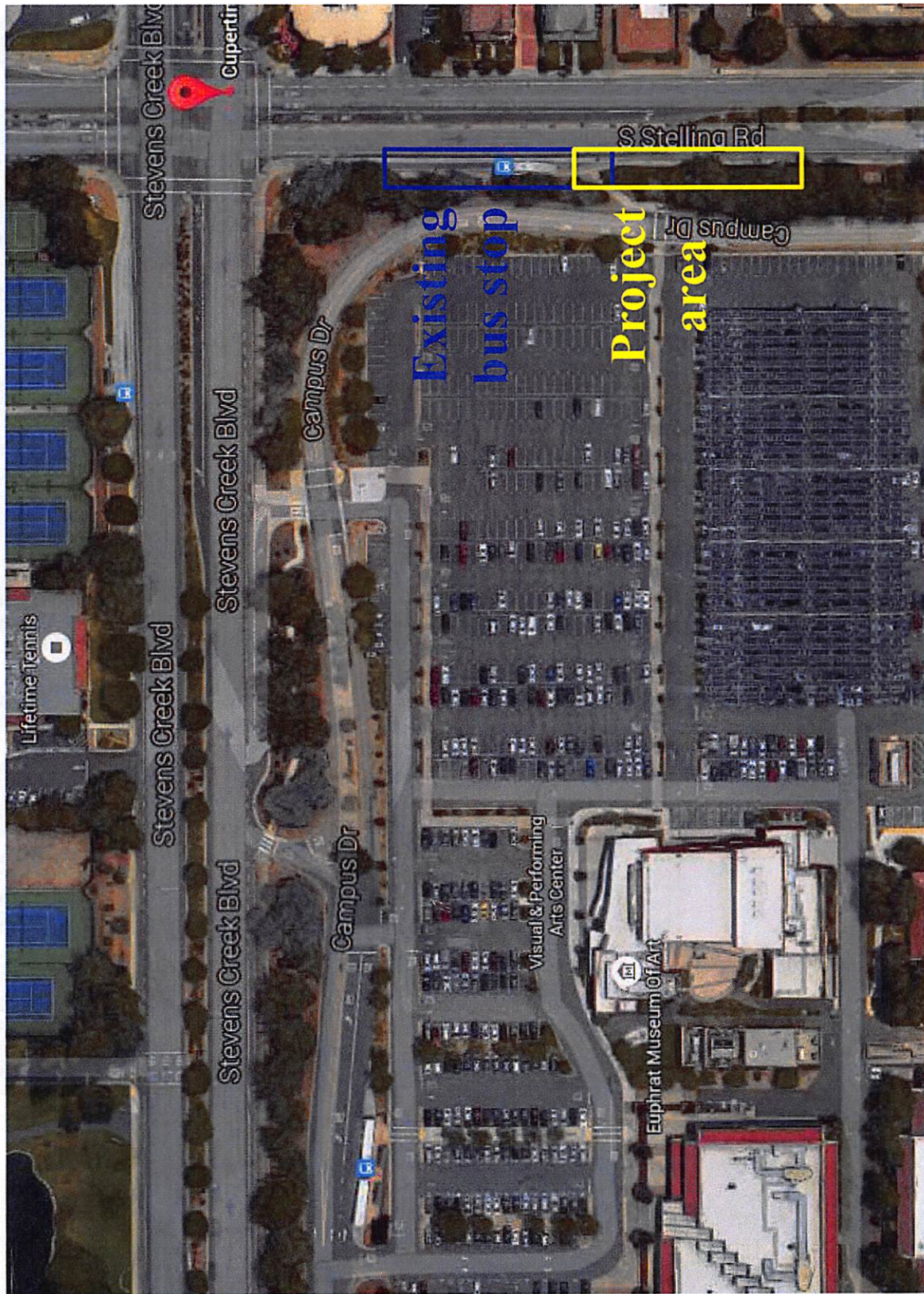


Outline



- Why the bus stop improvement is necessary
- Project Details
- Example look and feel
- Next steps

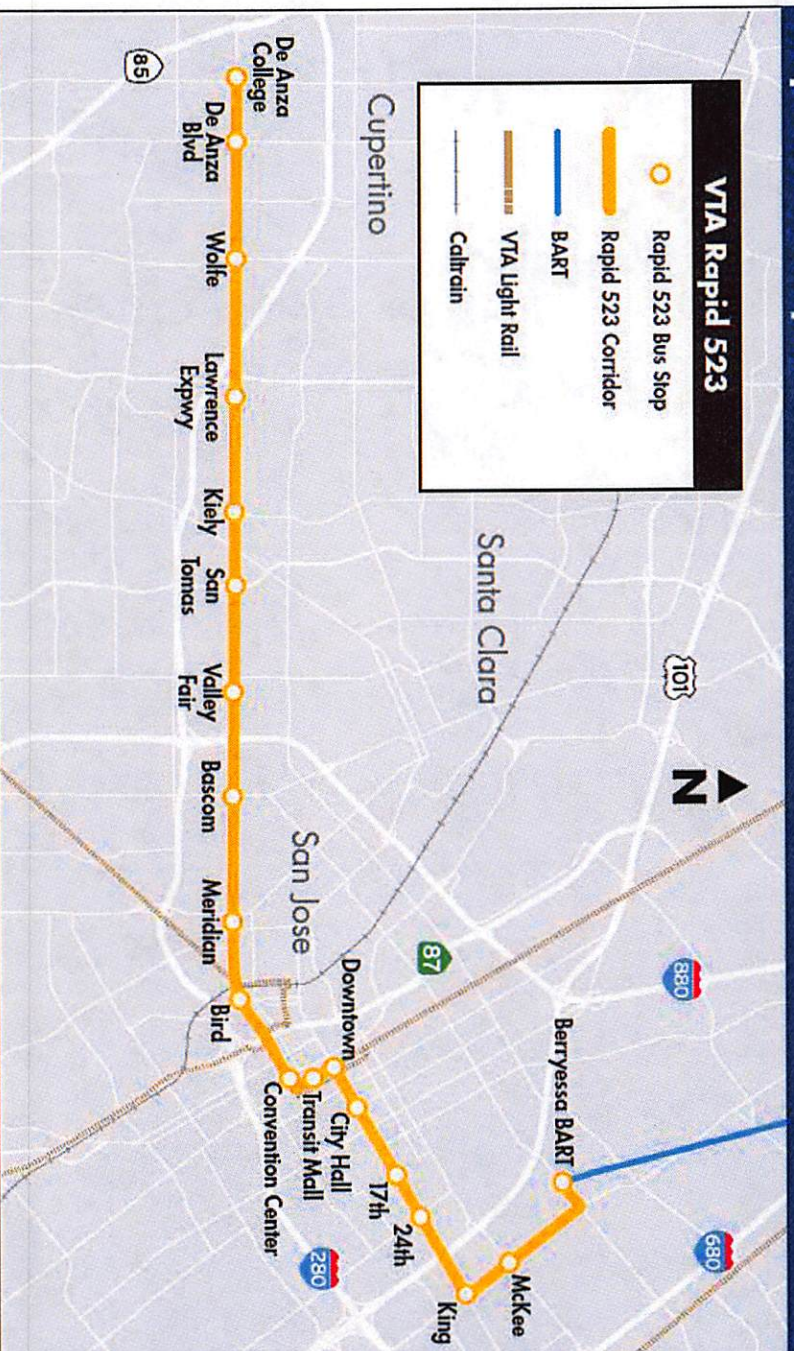
Project Area



Why to Improve the Stelling Road Bus Stop

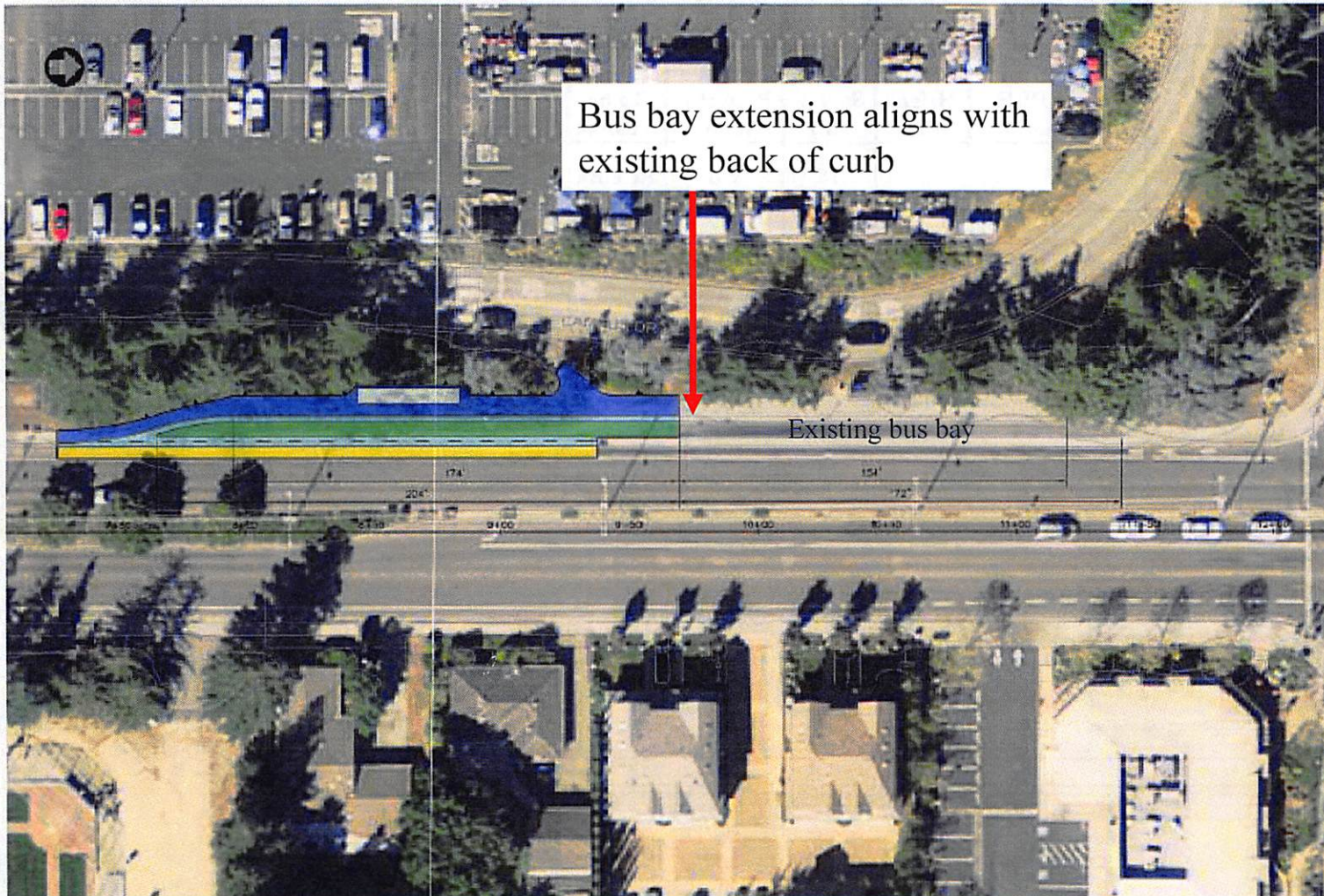


Rapid 523 Project



- Upgrade line 323 to Rapid service
- Connect Berryessa BART to De Anza College
- 10 minute frequency
- Transit Signal Priority – improve travel time

Bus Bay Extension



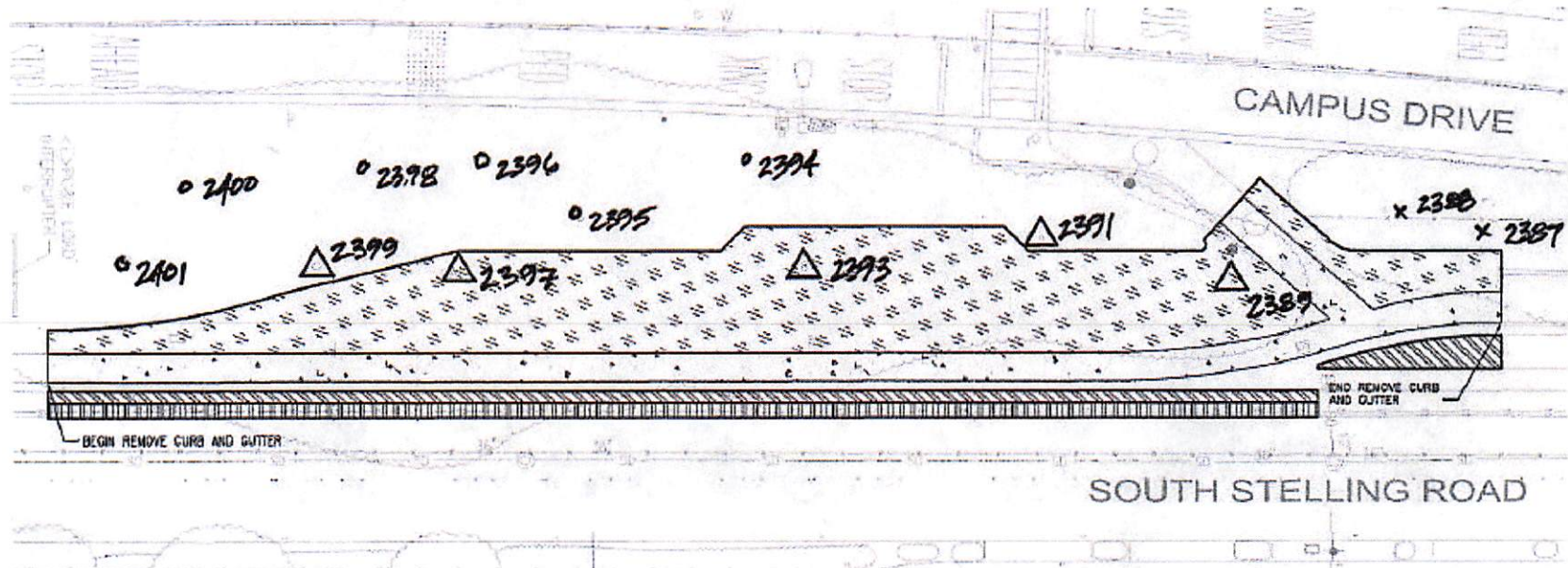
- PCC BUS PAD
- CONCRETE SIDEWALK
- CONCRETE CURB, GUTTER, AND VALLEY GUTTER
- AC PAVEMENT
- TRANSIT SHELTER



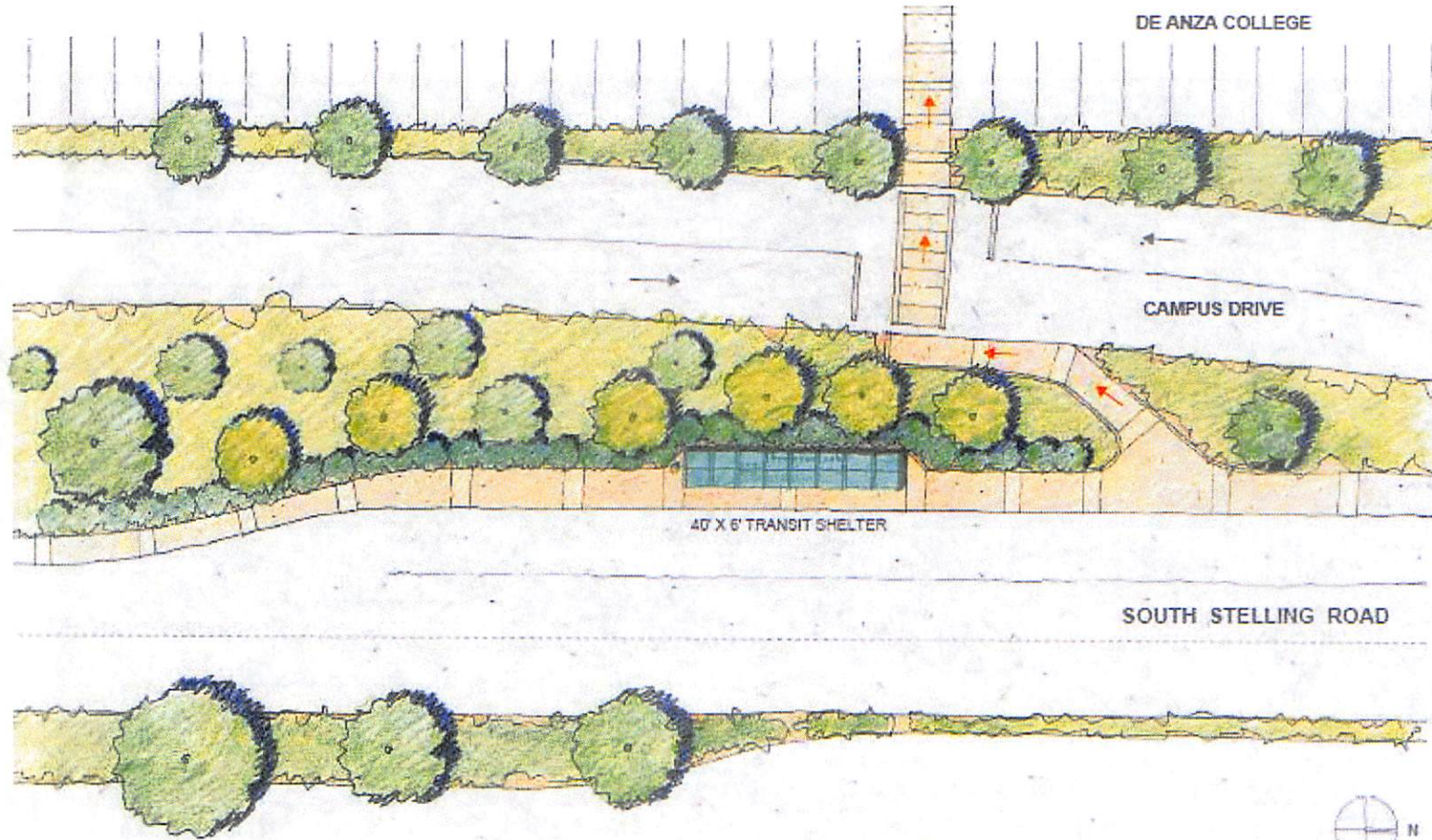
Tree Impact



Tree #	Common Name	Scientific Name	Trunk DBH (inches)	Approx. Height (ft.)	Approx. Spread (ft.)	Protected status	To be removed	Condition*	Comments
2389	Incense cedar	<i>Calocedrus decurrens</i>	15	28	18	No	Remove	Poor	50% dead canopy
2391	Atlas cedar	<i>Cedrus atlantica</i>	7	14	16	No	Remove	Good	
2393	Deodar cedar	<i>Cedrus deodara</i>	20+10= 30	48	45	Specimen	Remove	Good	
2397	Deodar cedar	<i>Cedrus deodara</i>	12+9+20= 41	55	34	Specimen	Remove	Fair	branches broken out at 3', 20', & 25'
2399	Deodar cedar	<i>Cedrus deodara</i>	20	50	26	Specimen	Remove	Good	5 degree lean toward street

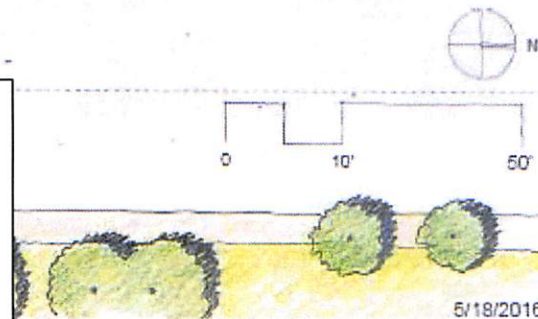


Bus Stop Site Plan



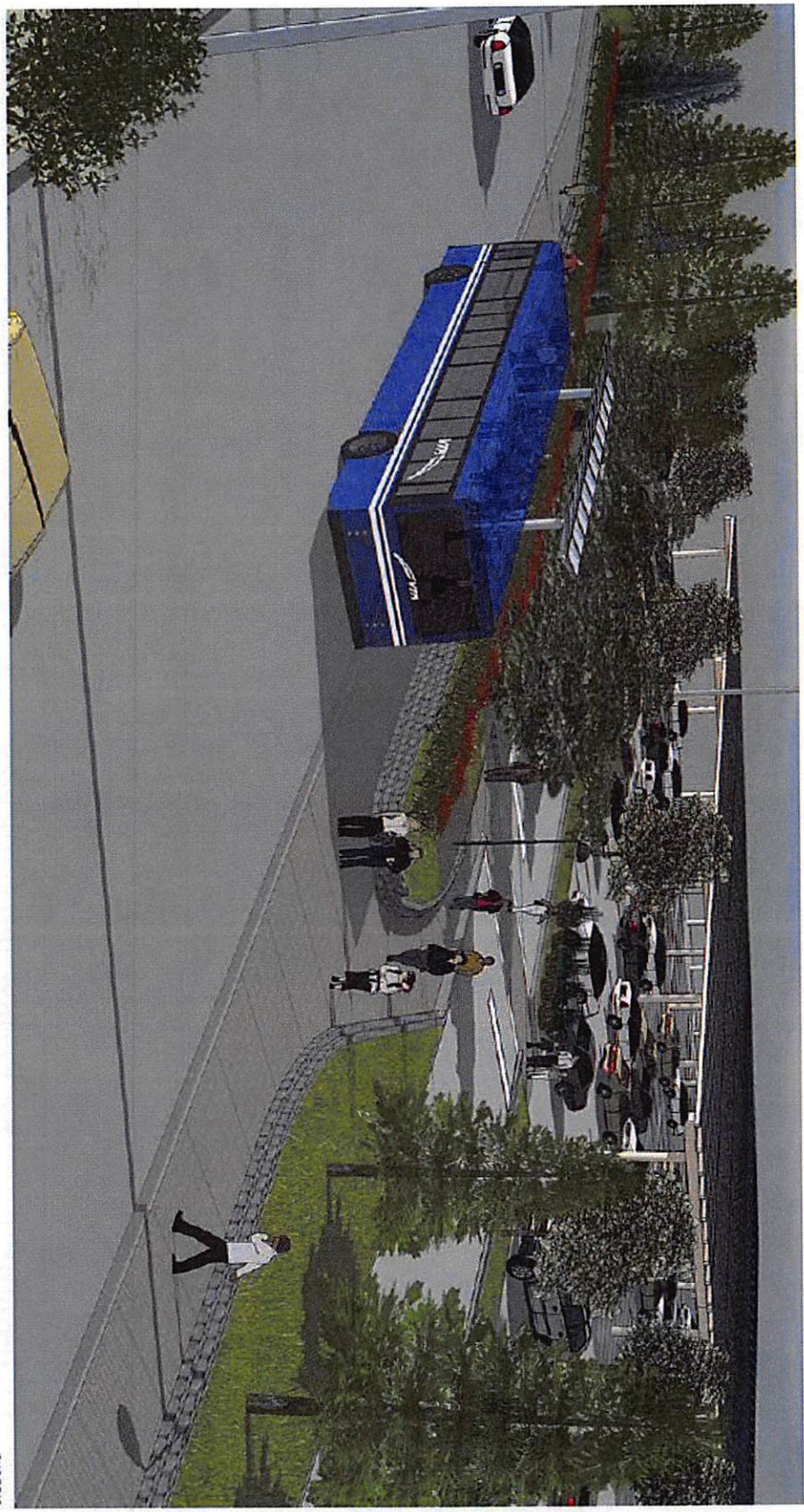
Project Elements:

- Extend bus bay
- Replace trees
- New landscaping
- Pedestrian walkway
- Enhanced waiting area
- Technology
- Enhanced bike lane



5/19/2016

Example of Completed Bus Stop



5/16/2016

Example of Completed Bus Stop

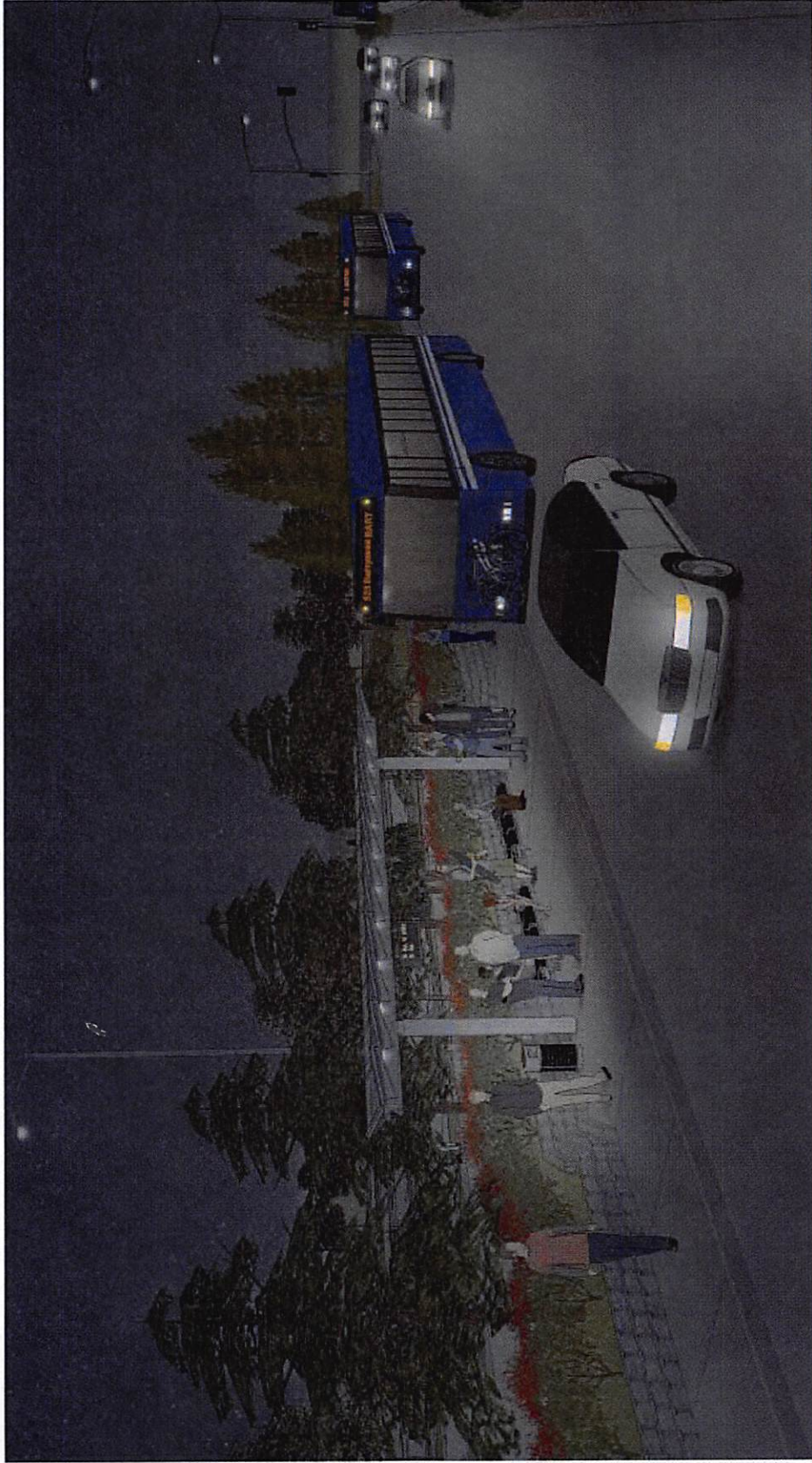


Example of Completed Bus Stop



5/18/2016

Example of Completed Bus Stop



CSM

Next Steps



- Easement and permits to extend bus stop
- Final Design
- Construction
 - Tree replacement and landscaping
 - Waiting area amenities
 - Walkway
 - Enhanced bike lane
- Schedule to align with opening of VTA BART in fall 2017
- No construction during parking garage retrofit